

■  
■  
■ extensions to the original pub building were required to provide world-class accommodation with en-suite amenity, dining, reception and convention facilities. Parachilna publicans Jane and Ross Fargher envisioned design of the new work to take into account the Australian Outback character of the existing stone building, the extremes of semi-desert climatic conditions and their already established reputation for high quality food and service.

Architect John Maitland developed a scheme that preserved the character and entry experience of the original pub building. A rear mezzanine level for large functions was added above the original bedrooms, forming a link with a new extension consisting of eight bedrooms partially sunk into the earth and protected by a low-pitched hipped roof.

The original pub was sited to address the railway siding with its back toward the spectacular views to the Flinders Ranges. The new extension design opens the back of the pub to these views from the upper Mezzanine windows and deck, ground level Alfresco Courtyard and from windows in the eight new bedroom suites.

Architecturally, the old and the new form a perfect “marriage”, enlivening the experience of their unique characters through an interesting and equitable blending of contrasts.

Private and public spaces link easily to foster amiable interactions, meeting places, spontaneous conversations, being in or out of the inevitable crowd scene overflowing from the front bar into the dining areas and out to the old front verandah.

*Environmentally, building design of the new extension, incorporates sustainable design features that address all the basic tenets of sustainable development;*

#### *orientation*

Orientation of the building admits sunlight in winter to northern rooms and roof overhangs are designed for summer shading. Solar tubes cast natural light to bathrooms and the main passage.

#### *ventilation*

Cross-flow ventilation is maximised by a sophisticated air movement system installed in each room. In summer, internally cooled air is introduced near floor level and exhausted through roof spaces. This process is reversed in winter. (see Cooling and Heating for more detail).

#### *thermal mass*

As external temperatures climb or drop to extremes, the thermal mass of the earth and in the sand-filled concrete block walls keeps internal temperatures from fluctuating.

## the prairie hotel

#### *the owners*

Jane and Ross Fargher have been actively involved in both the design and construction phases of the project.

#### *the architect*

John Maitland of Energy Architecture specialises in energy efficient and ecologically sensitive architecture.

#### *the engineer*

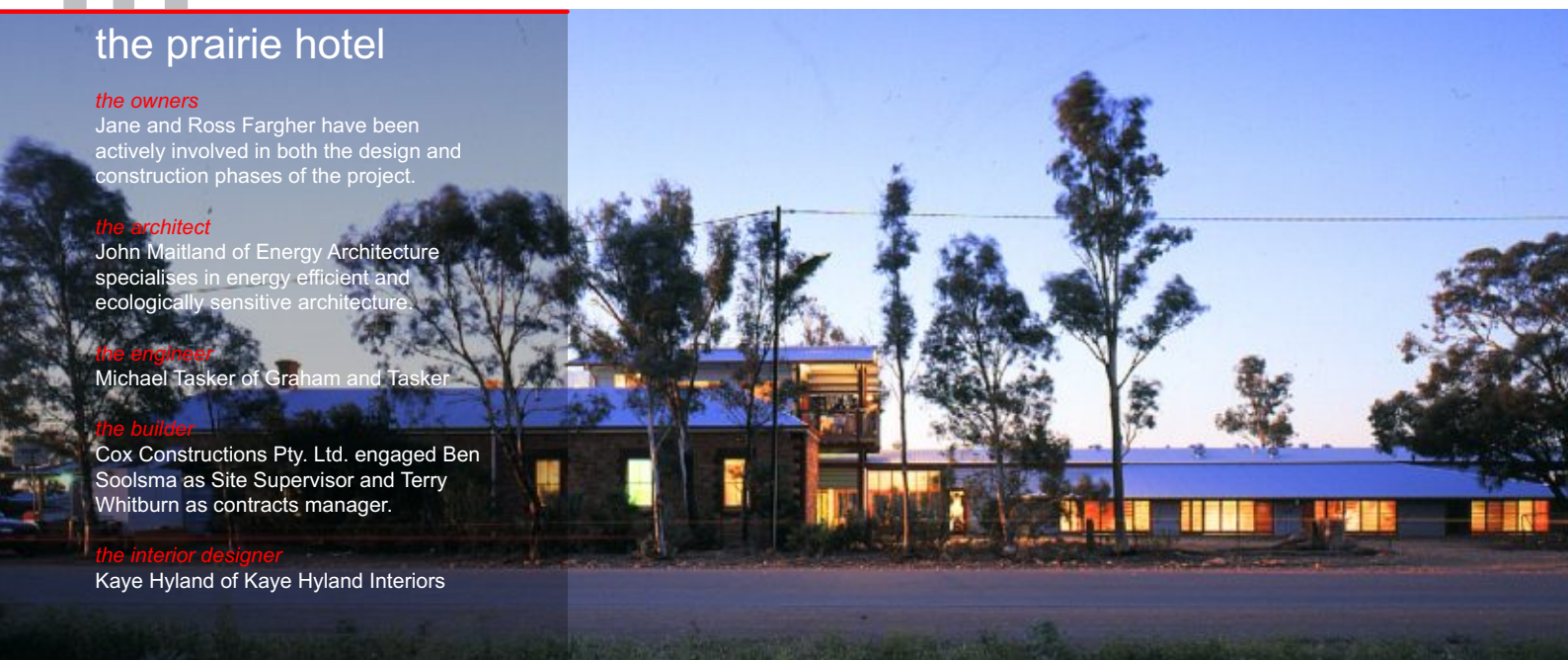
Michael Tasker of Graham and Tasker

#### *the builder*

Cox Constructions Pty. Ltd. engaged Ben Soolsma as Site Supervisor and Terry Whitburn as contracts manager.

#### *the interior designer*

Kaye Hyland of Kaye Hyland Interiors





**insulation**

Insulation in walls and roof spaces works together with thermal mass and ventilation to maintain constant indoor temperatures at a comfortable level. Insulation throughout is made from Australian wool.

**cooling**

When extra cooling is required, there are low-energy evaporative conditioners which feed cooled air via ducts under the floors of the bathroom/entry areas of each room. Windows stay closed to allow the cooled air to be exhausted through ceiling level vents, cooling the roof space by purging of sun-heated air through dual function roof vent caps.

**heating**

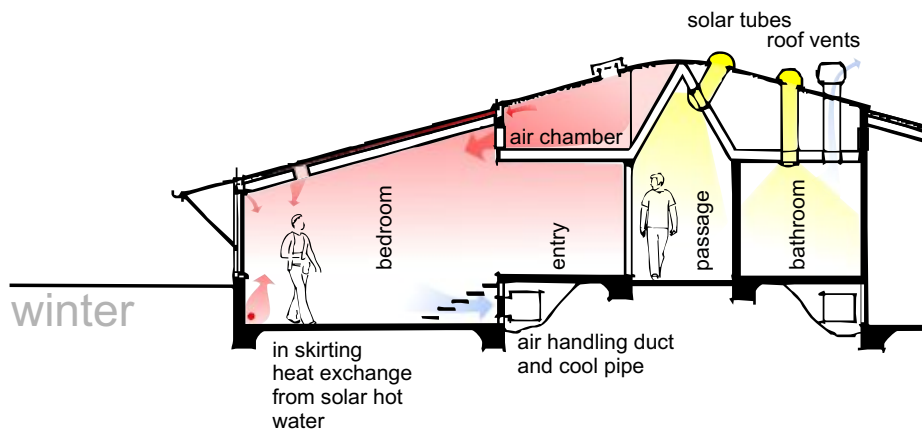
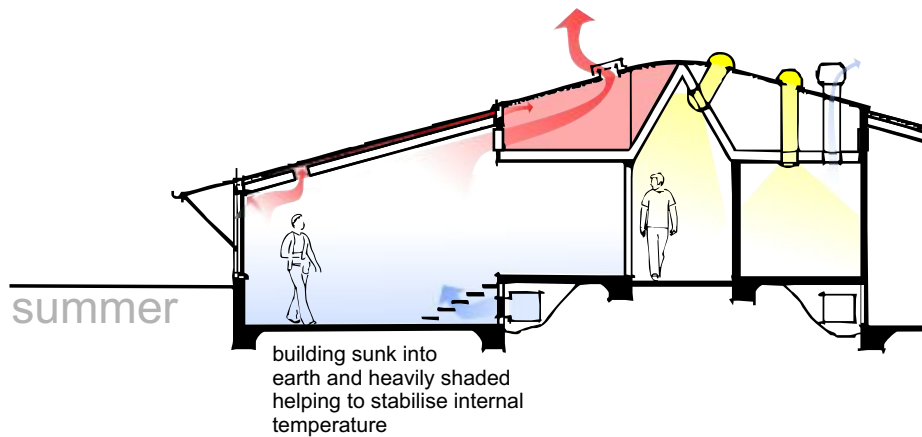
The process works in reverse for winter. The sun-warmed air in the roof space is drawn into the room and exhausted into the underground ducts. Additionally, solar heated water flows through strip heaters arranged under the windows of the earth sunken walls to warm internal air and also to be stored by thermal mass of earth and walls.

**water**

Constant circulation of solar heated water allows immediate flow of hot water through taps and shower heads preventing loss of delay run-off. Fixtures and fittings are selected for their water-saving performance. All rainwater is collected and stored.

**materials**

Materials were selected for their availability at this remote location, lowest environmental impact, recycled status, and beauty. Timbers are recycled. Windows, doors and frames are Oregon, and steps, bench and vanity tops are Jarrah from the old wool stores at Port Adelaide. Jarrah steps and balustrade with Wandoo panelling form the staircase to the mezzanine. Demolition of the old laundry provided Mount Gambier stone used for the long passage walls.



Contact Energy Architecture

[www.energyarchitecture.com](http://www.energyarchitecture.com)

[info@energyarchitecture.com](mailto:info@energyarchitecture.com)

p: +61 08 8410 4999

f: +61 08 8410 2566

L1 192 Waymouth St

Adelaide SA 5000